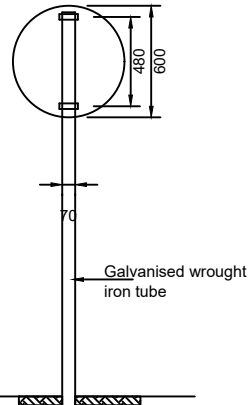
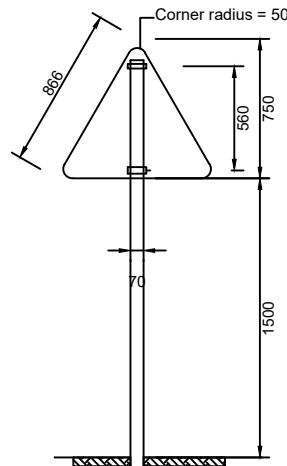


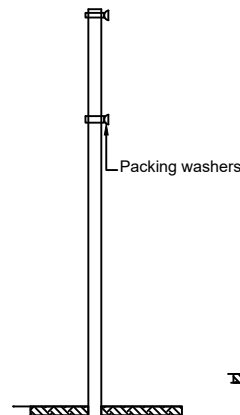
PRIORITY SIGN



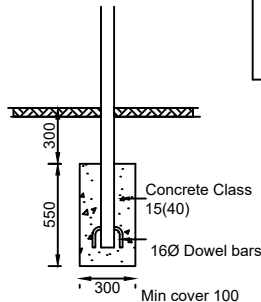
PROHIBITORY AND MANDATORY SIGN



WARNING SIGN



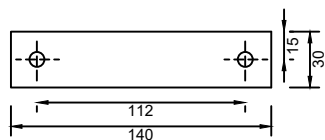
TYPICAL SIDE ELEVATION



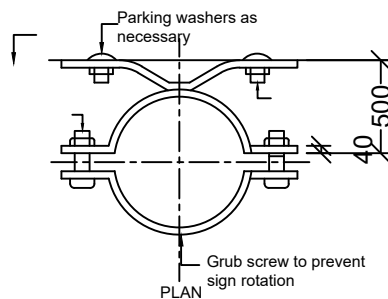
FOUNDATION DETAILS

(FOR PRIORITY, PROHIBITORY, INFORMATION, MANDATORY AND WARNING SIGNS)

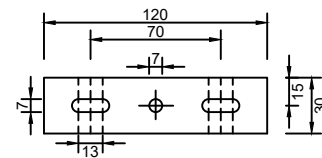
STIFFENING OF SIGNS			
	SHAPE	CONDITION	STIFFENING
PRE-FORMED FLANGE 		$W > 600$	15 Edge flange or 15x15x5 Angle finished to edges
ANGLE STIFFENING 		Dia. > 600 (Including 'STOP' sign)	15 Edge flange
		$W \text{ or } > 600 \text{ and } W/D \text{ OR } D/W > 2.5$ or Either $W \text{ or } D > 900$ NOTE: - If $D > 1000$. Sign must be stiffened by 25x25x3 angles fixed horizontally so that each panel depth < 500 in addition to above stiffening.	25 Edge flange or 25x25x3 Angle fixed to edges



ELEVATION A-A



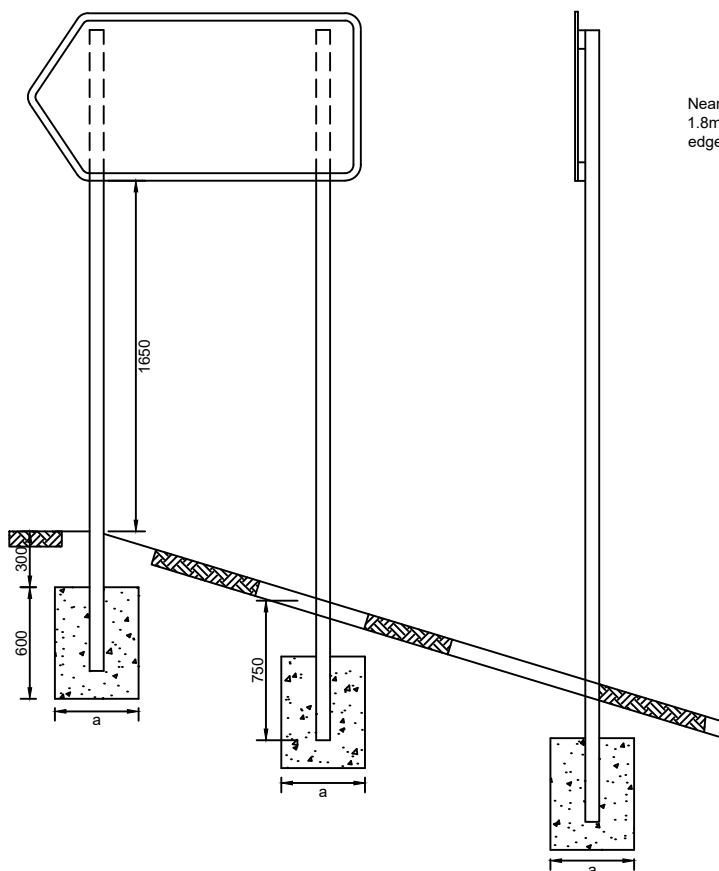
PLAN



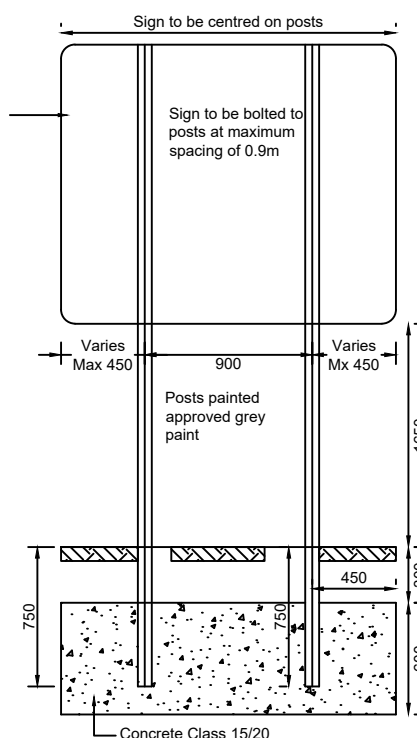
ELEVATION B-B

DETAILS OF FIXING ALL TYPES OF SIGNS

ERECTION DETAILS

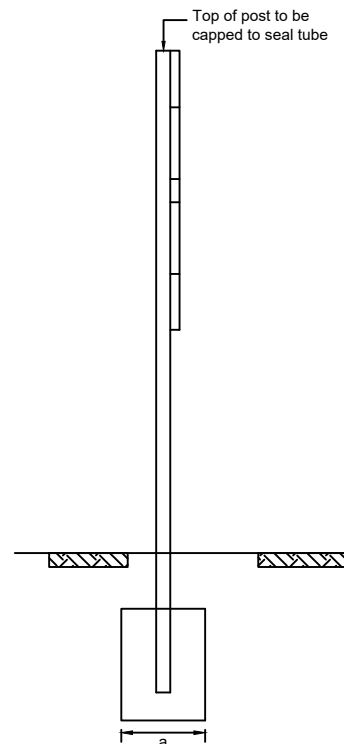


Near edge of sign to be 1.8m from carriageway edge

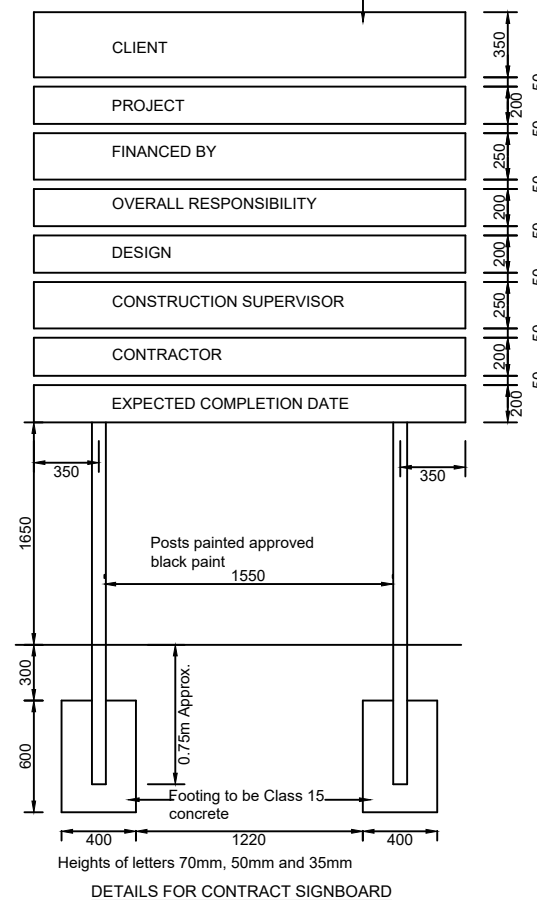


Where posts are of different lengths footing, to be stepped at point mid-way between posts to give 0.3m cover of soil at post


SIGN AND FOUNDATION DETAILS

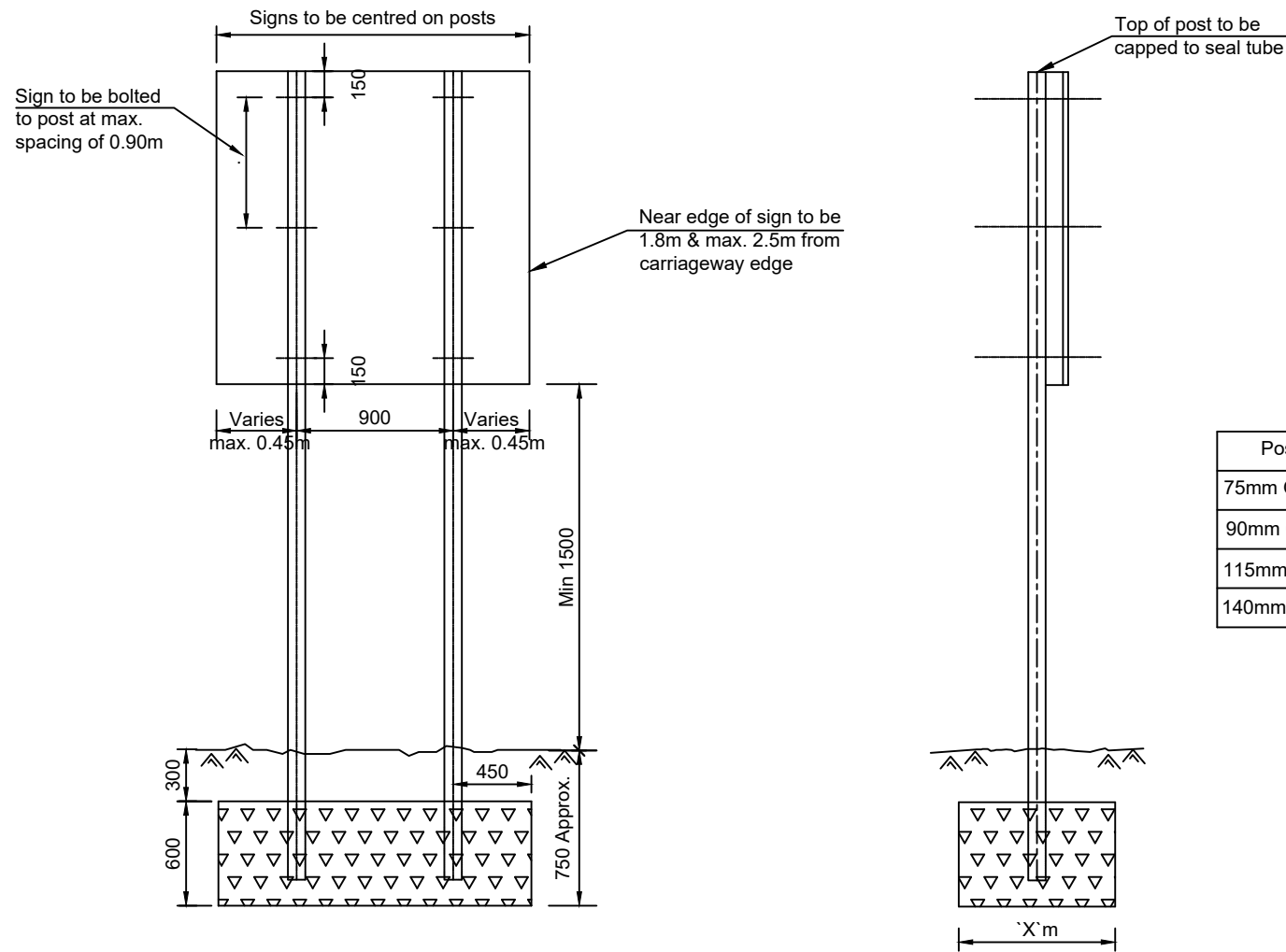


Signboard: white letter background colour: B. S. O - 005

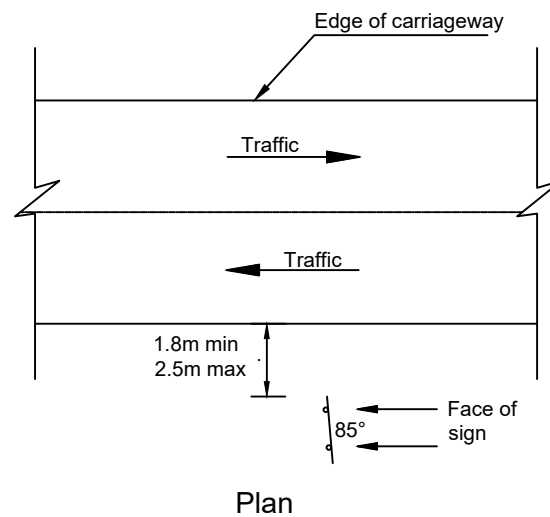
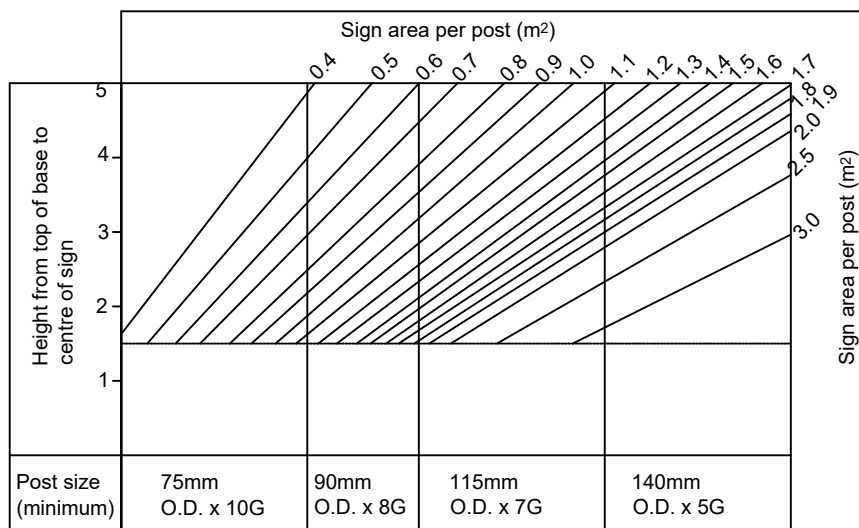
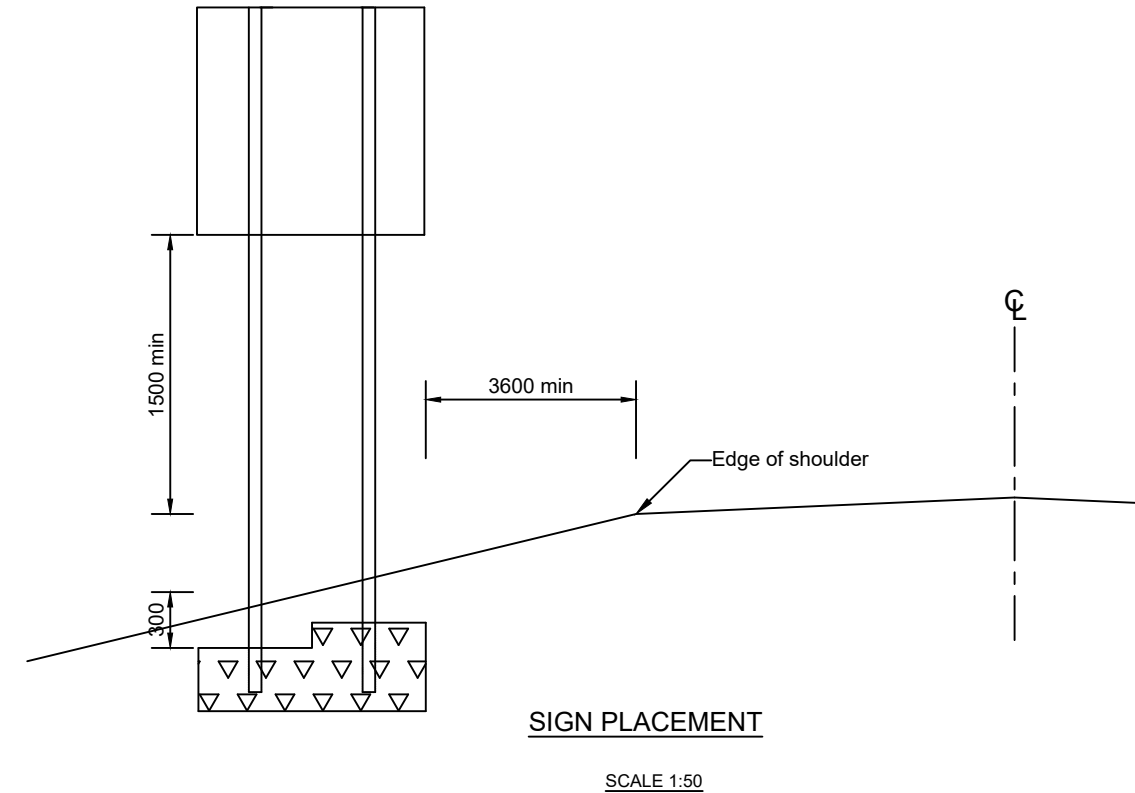


DETAILS FOR CONTRACT SIGNBOARD

NO.	AMENDMENTS	DATE	CLIENT:						
			 <div>REPUBLIC OF KENYA MINISTRY OF ROADS AND TRANSPORT P.O. BOX 30260-00100 NAIROBI</div>						
STANDARD ANCILLARY DRAWINGS							Road sign erection details		
							DRAWING NO.: WSCM/84/2/04		
							Date: Jan. 2024	Scale: N.T.S.	Sheet No.: 1/2



Standard Sign Post Details



- NOTES:
1. All dimensions are in millimetres unless otherwise stated
 2. Where posts are on different length, footing to be stepped at point midway between posts to give 0.3m cover of soil at post.
 3. Footing to be class 15 concrete
 4. For a single post the size in the concrete footing will be 0.9m x 0.6m x 'X' m
 5. For prohibitory, warning, mandatory and priority signs the size of the concrete footing will be 0.45m x 0.45m
 6. Sign post shall be cylindrical, galvanized wrought iron tubes or similar approved by the engineer, of sizes in accordance with the design table below